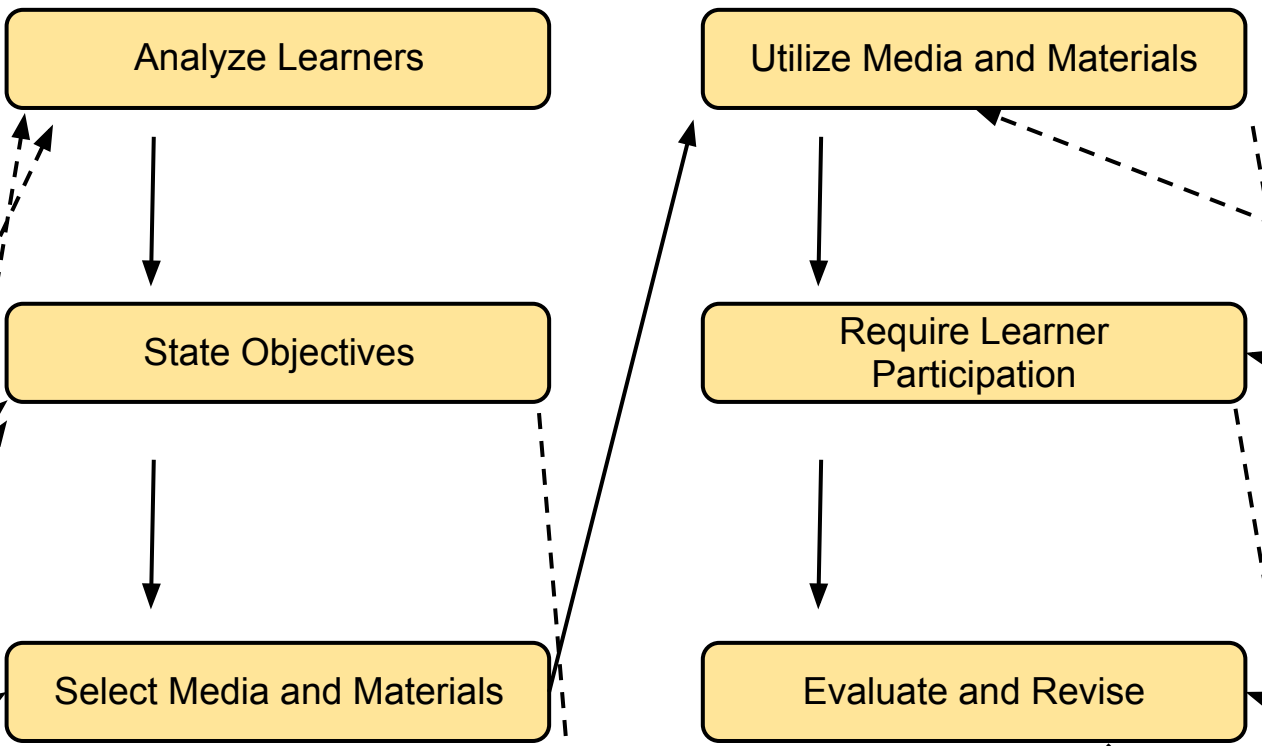
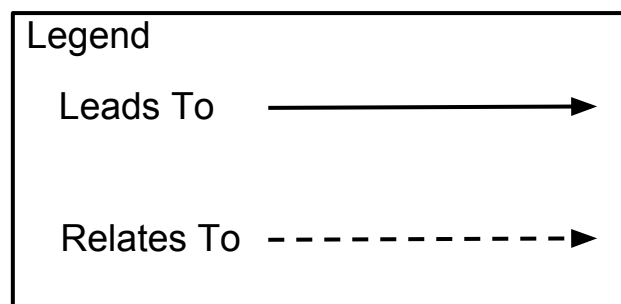


Heinich, Molenda, Russell and Smaldino Model - ASSURE (Gustafson and Branch, 2002, pg 23)

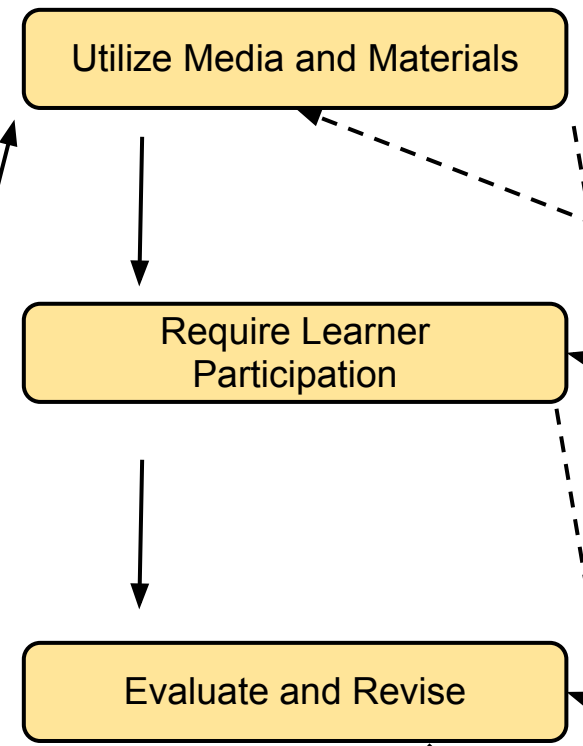


As a former classroom teacher designing lessons and units, this is the model that I have used most often.



Newby, Stepich, Lehman and Russell Model (Gustafson and Branch 2002, pg 25)

This model resembles the ASSURE method.



Select Media and Materials

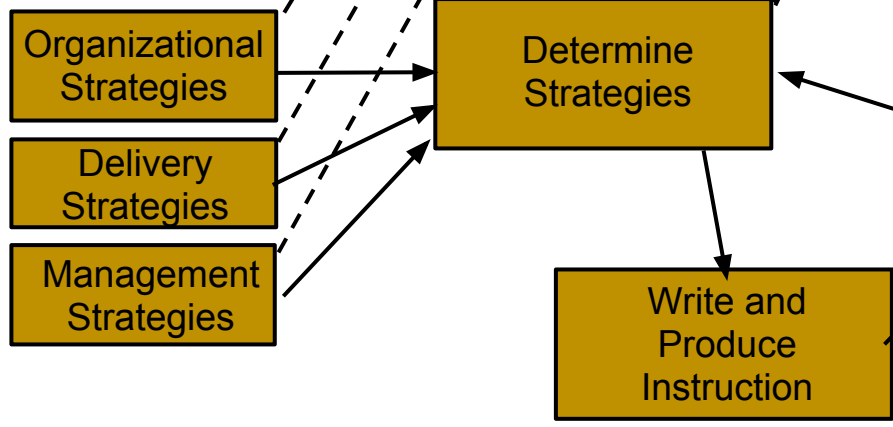
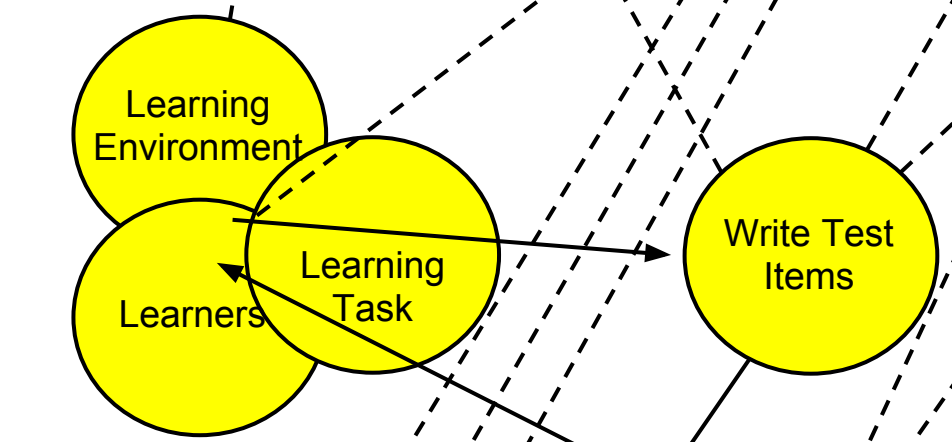
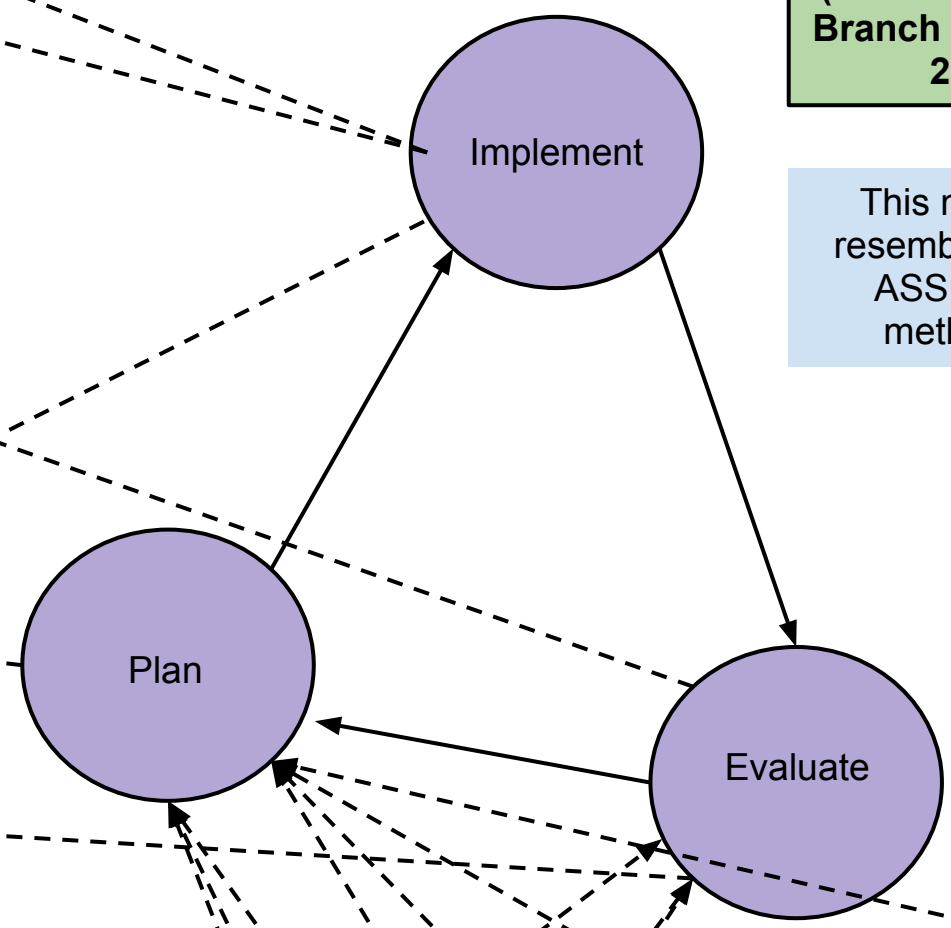
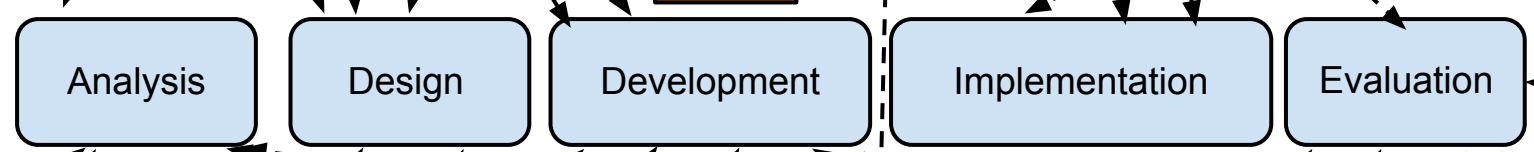
State Objectives

Analyze Learners

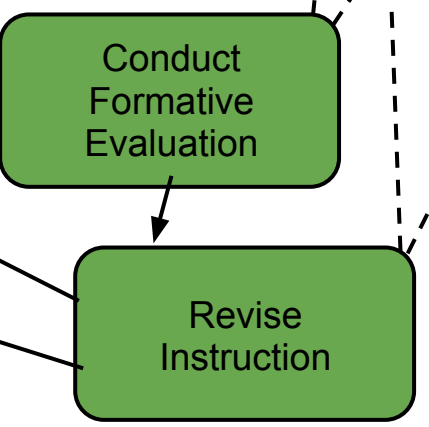
Evaluate and Revise

Require Learner Participation

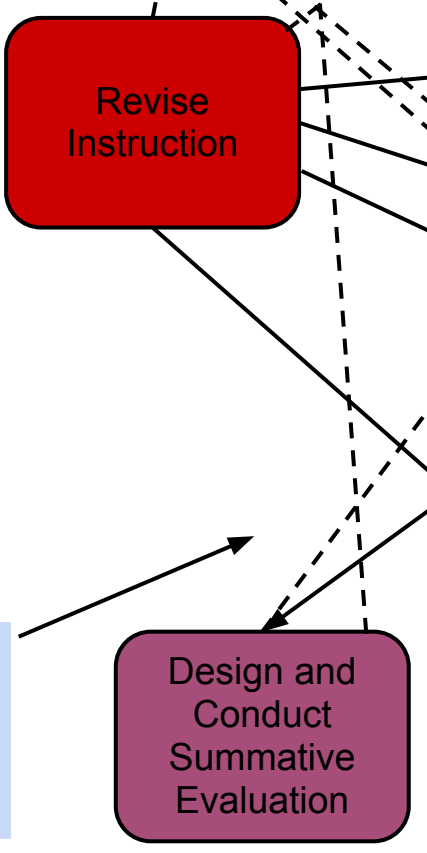
Utilize Media and Materials



Smith and Ragan Model (Gustafson and Branch, 2002, pg 58)



It's interesting to me that the implementation phase seems to be implied with these bottom two model (Smith and Ragan & Dick, Carey and Carey)



The Dick, Carey and Carey Model (Gustafson and Branch, 2002, pg 60)

